

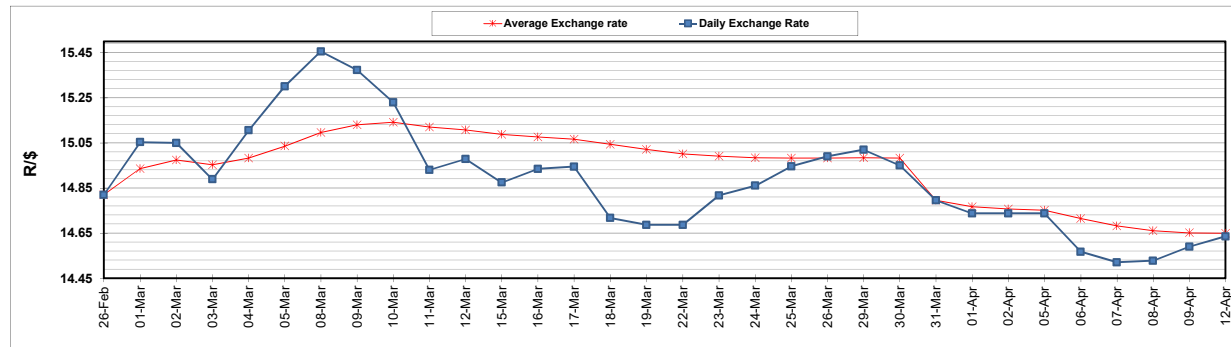
	PETROL 95 ULP	PETROL 93 ULP & LRP	DIESEL 0.05%	DIESEL 0.005%	ILL. PAR.
GAUTENG PUMP PRICE (SA c/l) AS FROM 07/04/2021	1,732.000	1,710.000	-	-	-
WHOLESALE PRICE (SA c/l) AS FROM 07/04/2021	-	-	1,477.620	1,480.020	880.488
SINGLE NATIONAL MAXIMUM RETAIL PRICE	-	-	-	-	1,106.000
BASIC FUEL PRICE - 12/04/2021 (SA c/l)	705.159	691.927	648.829	652.739	631.371
PRESS RELEASE CONTRIBUTION TO BFP 07/04/2021 - 12/04/2021 (SA c/l)	736.170	724.170	690.630	693.030	667.128
UNIT OVER/(UNDER) RECOVERY - 12/04/2021 (SA c/l)	31.011	32.243	41.801	40.291	35.757
AVERAGE BASIC FUEL PRICE 31/03/2021 - 12/04/2021	709.610	694.978	640.312	642.917	622.769
AVERAGE UNIT OVER/(UNDER) RECOVERY 31/03/2021 - 12/04/2021	(12.884)	(7.474)	29.762	30.669	25.470

### ANALYSIS MOVEMENT OF AVERAGE OVER/(UNDER) RECOVERY

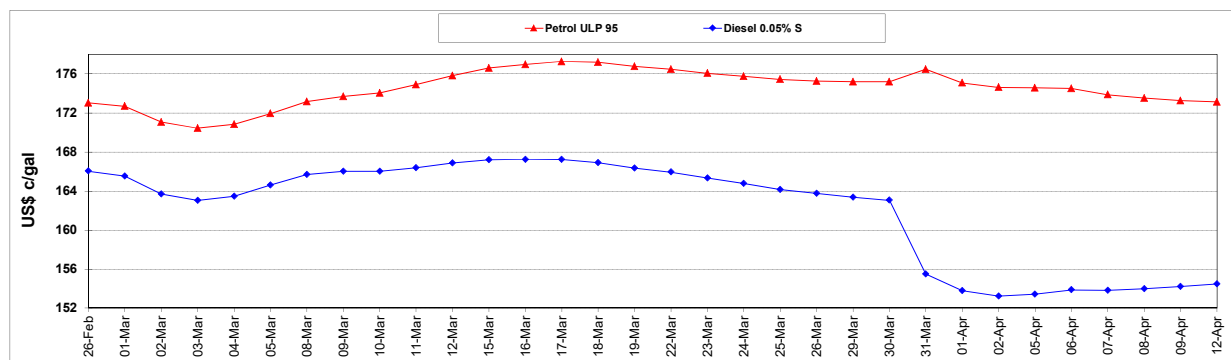
	PETROL 95	PETROL 93	DIESEL 0.05%	DIESEL 0.005%	ILL. PAR.
- MOVEMENT IN INTERNATIONAL PRODUCT PRICES	(29.019)	(23.277)	15.203	16.051	11.310
- MOVEMENT IN EXCHANGE RATE	16.135	15.802	14.559	14.618	14.160
AVERAGE UNIT OVER/(UNDER) RECOVERY 31/03/2021 - 12/04/2021	(12.884)	(7.474)	29.762	30.669	25.470

**R/\$ EXCHANGE RATE - (R/\$14.6350 - 12/04/2021)**

### EXCHANGE RATE USED IN BASIC FUEL PRICE



### INTERNATIONAL PRODUCT PRICES OF BASKET USED IN BASIC FUEL PRICE



### BASIC FUEL PRICE IN SA CENTS PER LITRE

